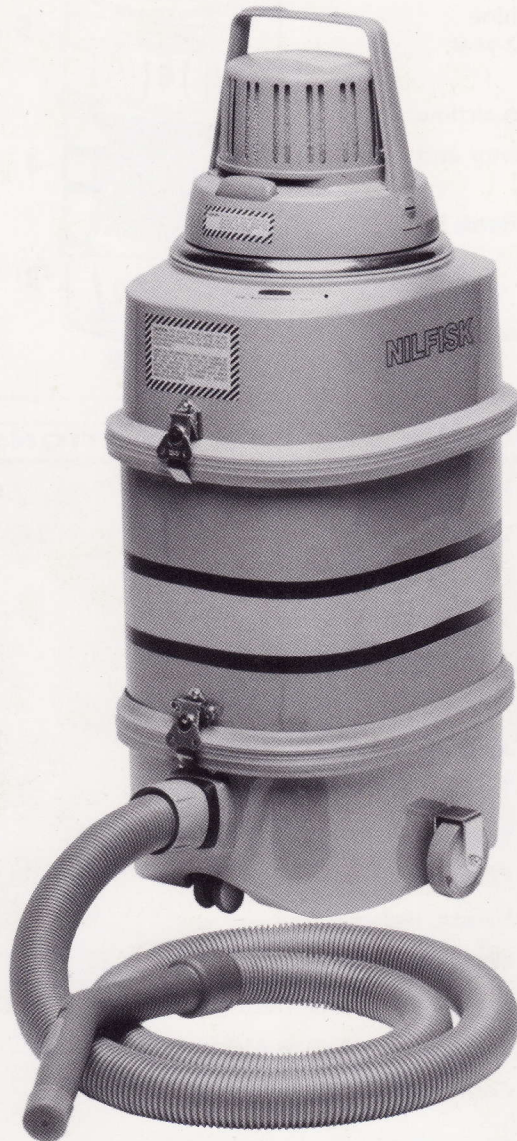
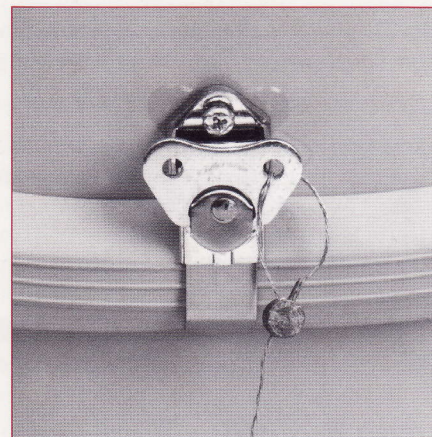
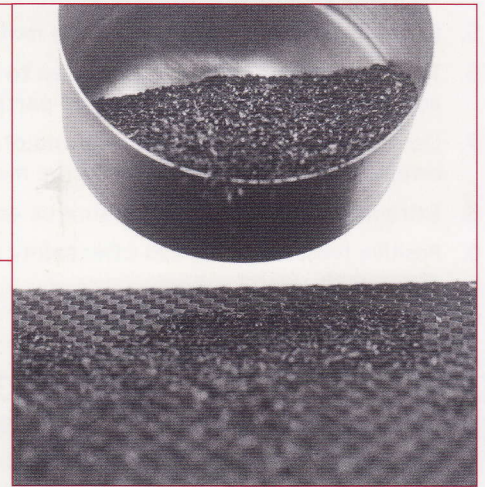


Nilfisk

VAPOR VAC



Impregnated carbon granules in patented honey-comb layers provide the most complete contact, and the longest dwell-time, between carbon and toxic gases.



Positive twist safety latches offer added security by discouraging unauthorized disassembly of the vacuum.

Captures toxic semiconductor gases, and ultrafine particulate. The Vapor Vac with impregnated carbon filter cartridge captures and retains such toxic gases as arsine, phosphine and chlorinated solvent vapors (carbon tetrachloride and chloroform), released during the cleaning of semiconductor process equipment such as molecular beam epitaxy (MBE) chambers, ion implanters and plasma etching machines.

Built-in activated carbon filtration with honey-comb design allows maximum dwell-time of toxic gases, preventing their escape via the vacuum's exhaust. An optional downstream HEPA* or ULPA** filter retains ultrafine particulate collected by the vacuum or generated by the motor, to maintain "absolute" cleanroom standards.

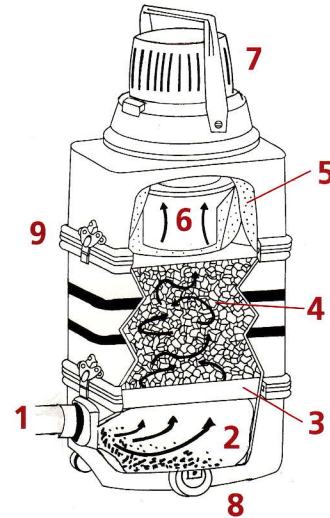
An assortment of 1 1/4-inch accessories is also available. An hour meter is available to gauge hours machine is in operation.

* HEPA - High Efficiency Particulate Air - Retains 99.97% at 0.3 microns.

** ULPA - Ultra Low Penetration Air - Retains 99.999% at 0.12 microns.

NILFISK VAPOR VAC FEATURES

1. Six foot plastic hose tapers to 1 1/4" diameter, allowing access through small ports in machinery.
2. 2 1/4-gallon, 2-ply dust bag captures the bulk of collected debris.
3. HEPA-type pre-filter wafer.
4. Impregnated carbon filter captures such toxic gases as arsine, phosphine and chlorinated solvent vapors, preventing worker exposure. Up to 2-year cartridge service life.
5. Extra-large main filter protects the motor and maintains steady, even airflow.
6. The optional microfilter, a final step to pre-filtration, protects the motor and acts as a barrier to even superfine particles.
7. Downstream HEPA exhaust filter maintains absolute cleanroom standards by retaining particles generated by the motor.
8. Extra-large, smooth wheels ensure balance and maneuverability.
9. Positive twist safety latches offer safety and security by discouraging inadvertent disassembly.



GUIDELINES FOR WRITING YOUR PURCHASE SPECIFICATIONS

FILTRATION

1. Vacuum must have up to 6-stage filtration capability including (a) disposable 2 1/4-gallon paper bag, (b) HEPA-type pre-filter wafer, (c) activated carbon absorbent filter, (d) oversized napped-cotton main filter, (e) microfilter and (f) glass fiber exhaust (HEPA or ULPA) filter.
2. Impregnated carbon filter must completely absorb arsine, phosphine and chlorinated solvent vapors from the exhaust.
3. Microfilter must protect motor and be 99.5% efficient at 2 microns.
4. Optional HEPA exhaust filter must be 99.97% efficient at 0.3 microns in particle size and must mount on motor to prevent air by-pass. ULPA filter must be 99.999% efficient at 0.12 microns in size. All HEPA and ULPA filters must be individually DOP-tested and certified and have a normal service life of not less than one year.

CONTAINER

1. Container must have positive twist safety latches for added security.
2. Must have impact-resistant plastic canister with extra-large smooth wheels to ensure balance and maneuverability.

MOTOR

1. Motor must be interference suppressed so it will not affect sensitive electronic equipment.
2. Motor must supply airflow of 87 cfm and 102" waterlift**, measured with sealed orifice.
3. Noise level should not exceed 59 dB(A) measured at 6 1/2-feet from the cleaner.

WARRANTY

All equipment must be covered by a two-year warranty against defects in workmanship and materials.

VAPOR VAC SPECIFICATIONS

Motor type	GMPJ
Voltage*, volts	110-120
Current draw, amps	9
Watts consumed, watts	1100
Waterlift**, inches	102
Airflow, cfm	87
Air Performance, air watts	250
Tank capacity, gallons dry bulk	3 1/4
Paper bag capacity, gallons dry bulk	2 1/4
Cloth filter area†, square inches	1,030
Height, inches	30
Width, inches	13 1/2
Weight without accessories, lbs.	44 3/4
Sound level, dB(A) at 6 1/2 ft. from vacuum	59
Cord length, feet	30

Optional Accessories: HEPA & ULPA exhaust filters, sound suppressor, blower adaptor and microfilter.

* 220 volt available.

** With pressure relief valve inactive.

† Filter area includes paper bag, main filter, microfilter, HEPA.

Equipment leasing is available.
Contact your Nilfisk-Advance America representative
for details.

Printed in U.S.A
PS137 2/99



**Nilfisk
Advance**

setting standards

Nilfisk-Advance America, Inc., 300 Technology Drive, Malvern, PA 19355, (610) 647-6420, www.nilfisk-advance.com
Nilfisk-Advance Canada Company, 396 Watline Avenue, Mississauga, Ontario L4Z 1X2, Canada, (905) 712-3260

Since this product is continually being improved, these specifications may change without notice.